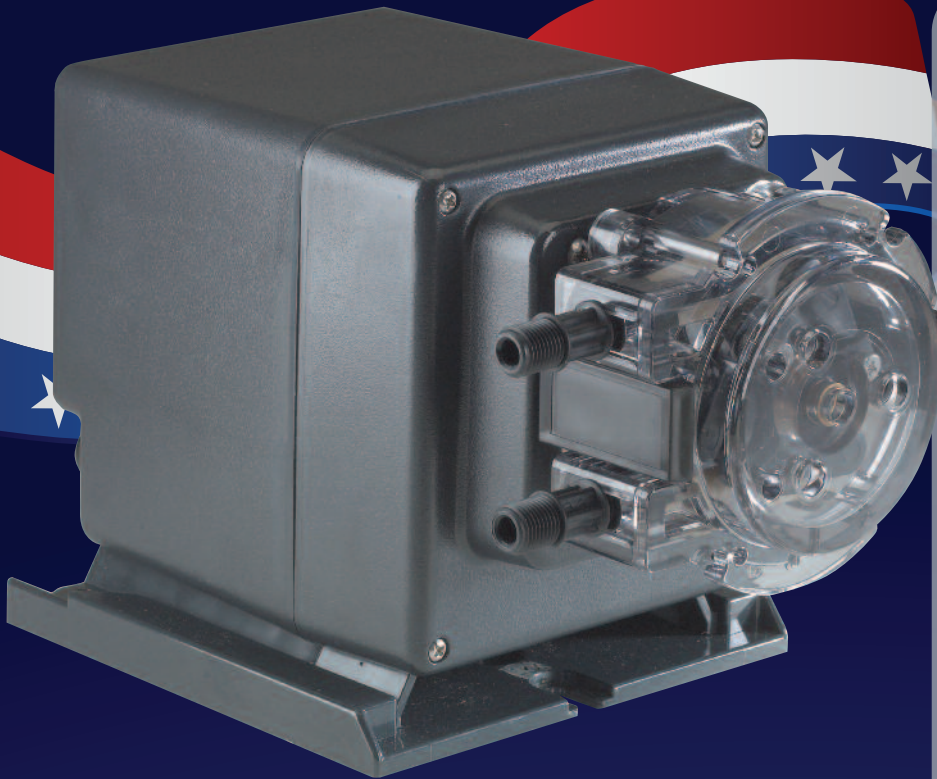


THE M128 SERIES PERISTALTIC METERING PUMP

Reliable injection of 1 ounce of solution to 128 ounces of water



*Specifically developed to
treat livestock water with:*

- ✓ *Antibiotics*
- ✓ *Vaccines*
- ✓ *Dietary supplements*
- ✓ *Acids*
- ✓ *Oxidizers (iodine, chlorine, chlorine dioxide, peracetic acid and hydrogen peroxide)*
- ✓ *Disinfectants*

M128 SERIES BENEFITS:

- Potentiometer on the back of the pump features “standby” setting that disables the pump while water consumption still registers to the controller in livestock operations
- Adjustable to work with a dry contact water meter with pulse rates of 1, 2, 4, or 10 pulses per gallon or 1 pulse per liter
- No need for filters upstream to pull out grit, sand and debris
- No need for back pressure valves
- Optional panel system for turnkey installation

M128 SYSTEM



THE M128 SERIES PERISTALTIC METERING PUMP

The M128 injects at a fixed amount per pulse which is actuated by a dry contacting water meter. The pump has a cable with four lead wires, two that must be connected to the water meter. Installations with a house controller can utilize the two remaining wires to register water consumption to the controller.

BUILD ITEM NUMBER

M						X
	Pump Tube	Voltage & Hertz	Pulse Setting	System (optional)		Factory Use Only

To build item number, select code based on application requirements. Item number is required for placing orders.

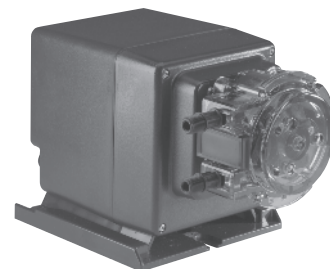
Pump Tube	05	#5 tube
	07	#7 tube

NOTE: Refer to sizing chart below.

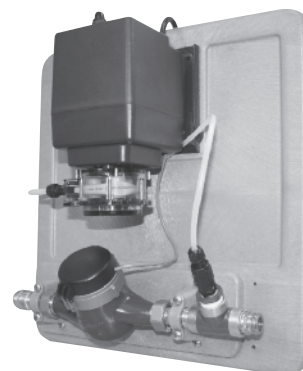
Voltage/Hertz	1	120V 60Hz
	2	220V 60Hz

Pulse Setting	1	1 gallon/pulse
	2	2 pulses/gallon
	3	1 liter/pulse (not available with panel system)
	4	4 pulses/gallon
	5	10 pulses/gallon (not available with 95 gpd pump)

System (optional)	P	Pump and corresponding meter mounted on panel
--------------------------	----------	---



M128 Pump



M128 System

SIZING FOR 1:128 DOSING

Model	Maximum Pressure	Pump Tube Number	Max. Output @ 50/60 Hz		Max. System Water Flow for 1:128 Dosing	
			oz/min	ml/min	gal/min	L/min
M05	25 psi (1.7 bar)	#5	8.4	249.7	8.4	31.8
M07*	100 psi (6.9 bar)	#7	3.5	105.1	3.5	13.2

NOTE: To inject at a ratio of 1:128 at flow rates higher than 3.5 gpm up to 100 psi, the injection point can be installed after a pressure regulator. This will allow flow rates up to 8.4 gpm up to 25 psi. Contact factory for assistance with sizing.

* Injection check valve included with pumps rated 26-100 psi (1.8-6.9 bar).

ALTERNATIVE SIZING FOR M07 MODEL USING 1 Pulse/Gallon METER

Dosage oz/gal	Dosage Ratio	Max. System Water Flow gal/min	Pulse Setting
1.0	1:128	3.5	1
0.50	1:256	7.0	2
0.25	1:512	14.0	4

NOTE: 1oz=29.57 ml; 1 gallon=3.78 liters; Contact factory for assistance with sizing.

NOTICE: The information within these charts is solely intended for use as a guide. The output data is an approximation based on pumping water under a controlled testing environment. Many variables can affect the output of the pump. Stenner Pump Company recommends that all metering pumps undergo field calibration by means of analytical testing to confirm their outputs.

This information is not intended for specific application purposes. Stenner Pump Company reserves the right to make changes to prices, products, and specifications at any time without prior notice.

FM128 0413



Stenner Pump Company
3174 DeSalvo Road
Jacksonville, Florida 32246 USA

Phone 904.641.1666
US Toll Free 800.683.2378
Fax 904.642.1012

www.stenner.com
sales@stenner.com
© Stenner Pump Company All Rights Reserved